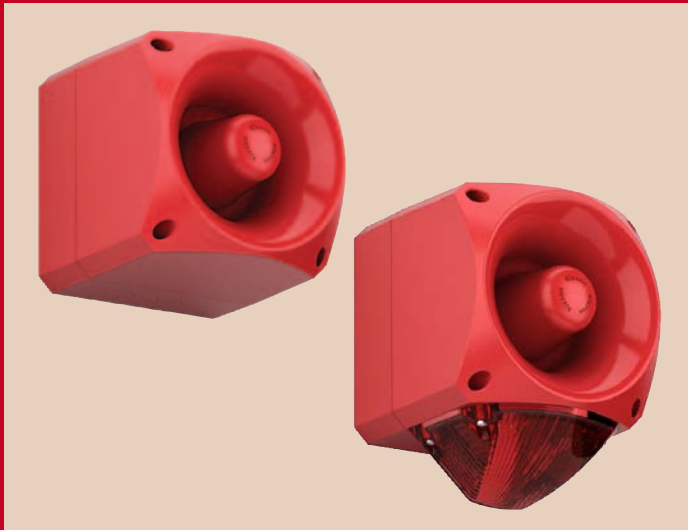


Nexus 110 (DC)



Features

- High sound output: 116dB (max); 110dB (typical)
- Quarter turn fasteners for ease of installation
- First-fix, wire to base technology
- EN54-3 compliant
- 5J xenon or high efficiency LED beacon option
- IP66 rated
- Volume control for greater flexibility
- Three alarm stages
- Low in-rush current (LED only)
- Static/flashing mode (LED only)

Overview

The Nexus 110 is a high output, low current consumption sounder designed for industrial, fire and marine use.

Connections are made to the base during the initial wiring phase which results in faster and more reliable installation. In addition, the head "clicks into place" and is fixed by quarter turn fasteners avoiding the need to screw up four individual screws thus enabling faster installation and accurate seal compression for weatherproofing.

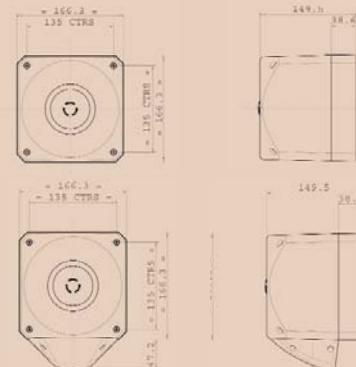
IP66 as standard means that Nexus can be installed in almost any location.

Either xenon or high efficiency LED beacons can be added to the Nexus sounder. The combination of powerful sounder and high output beacon ensures a very effective audio-visual signal.

105dB and 120dB units, as well as AC variants, are also available.

Applications

- Fire alarm; conveyors; process control alarm; cranes; moving machinery; general signalling; marine



- Fire
- Security
- Industrial
- Railway/Marine
- Hazardous Area
- Public Warning

Part No.	Colours	Audibility at 1m (typical)	Tones	Voltage	Current*	
					Sounder	Beacon
18-980554	Red	110dB (A)	64	10-60V DC	10-50mA	
18-980555	Red body, red lens, xenon beacon	110dB (A)	64	10-60V DC	10-50mA	250mA (average)
18-980556	Red body, amber lens, xenon beacon	110dB (A)	64	10-60V DC	10-50mA	250mA (average)
18-980589	Red body, clear lens, xenon beacon	110dB (A)	64	10-60V DC	10-50mA	250mA (average)
18-980662	Red body, bluelens, xenon beacon	110dB (A)	64	10-60V DC	10-50mA	250mA (average)
18-980660	Red body, green lens, xenon beacon	110dB (A)	64	10-60V DC	10-50mA	250mA (average)
18-980622	Red body, red lens, LED beacon	110dB (A)	64	10-60V DC	10-50mA	18mA / 65mA**
18-980623	Red body, amber lens, LED beacon	110dB (A)	64	10-60V DC	10-50mA	18mA / 65mA**
18-980664	Red body, clear lens, LED beacon	110dB (A)	64	10-60V DC	10-50mA	18mA / 65mA**
18-980666	Red body, bluelens, LED beacon	110dB (A)	64	10-60V DC	10-50mA	18mA / 65mA**
18-980655	Red body, green lens, LED beacon	110dB (A)	64	10-60V DC	10-50mA	18mA / 65mA**

* Depends on tone selected and supply voltage

** Flashing/static current consumption figures

IP Rating: IP66 Rating: Continuous Frequency: See Tone Table Operating Temp: -25°C to +70°C
Cable Entries: 5 Weight: Sounder 1.1kg; Sounder Beacon 1.2kg